

ITEM 40. PARKING – TIMED PARKING – ROTHSCHILD AVENUE ROSEBERY

TRIM RECORD NO: 2017/306648

RECOMMENDATION

It is recommended that the Committee endorse the reallocation of parking on the eastern side of Rothschild Avenue, Rosebery north of Crewe Place as follows:

- (A) Between the points 30.6 metres and 34 metres (one car space) as “Bus Zone”;
- (B) Between the points 34 metres and 105.2 metres (12 car spaces) as “2P 8am-8pm”;
- (C) Between the points 105.2 metres and 113 metres (one car space) as “Disability Parking”; and
- (D) Between the points 154.5 metres and 212.9 metres (10 car spaces) as “2P 8am-8pm”.

VOTING MEMBERS FOR THIS ITEM

<i>Voting Members</i>	<i>Support</i>	<i>Object</i>
City of Sydney		
Roads and Maritime Services		
NSW Police – Redfern LAC		
Representative for the Member for Heffron		

DECISION

BACKGROUND

The Development Consent for 25-55 Rothschild Avenue, Rosebery (D/2015/1901) requires the Applicant to submit a signage plan for kerb side parking and line marking arrangements for the site’s frontage along Rothschild Avenue that is to be referred to the Local Pedestrian, Cycling and Traffic Calming Committee.

COMMENTS

The City has approved the redevelopment of 25-55 Rothschild Avenue, Rosebery.

The kerb space on the eastern side of Rothschild Avenue, between Crewe Place and Stedman Street, along the front of 25-55 Rothschild Avenue, is predominantly signposted as “1P 8:30am-6pm Mon-Fri” and also includes statutory “No Stopping” restrictions and “Bus Zones”.

To ensure consistency with the City’s Neighbourhood Parking Policy, it is proposed to update the parking restrictions to reflect the change in adjacent land use. As such, it is proposed to replace the “1P 8:30am-6pm Mon-Fri” with “2P 8am-8pm and will comply with the City’s Neighbourhood Parking Policy which recommends a two-hour parking limit in urban renewal area as it better balances the aim of deterring commuter parking with the needs of households for visitors, carers and tradespeople.

The proposal will include the removal of an unnecessary “No Stopping” zone to provide an extension to the Bus Zone near Crewe Place. The additional kerb space will be reallocated as 2P with an existing disability parking space relocated closer to the intersection of Crewe Place to improve accessibility.

CONSULTATION

The Applicant must notify adjacent properties at least seven days prior to the implementation of the changes.

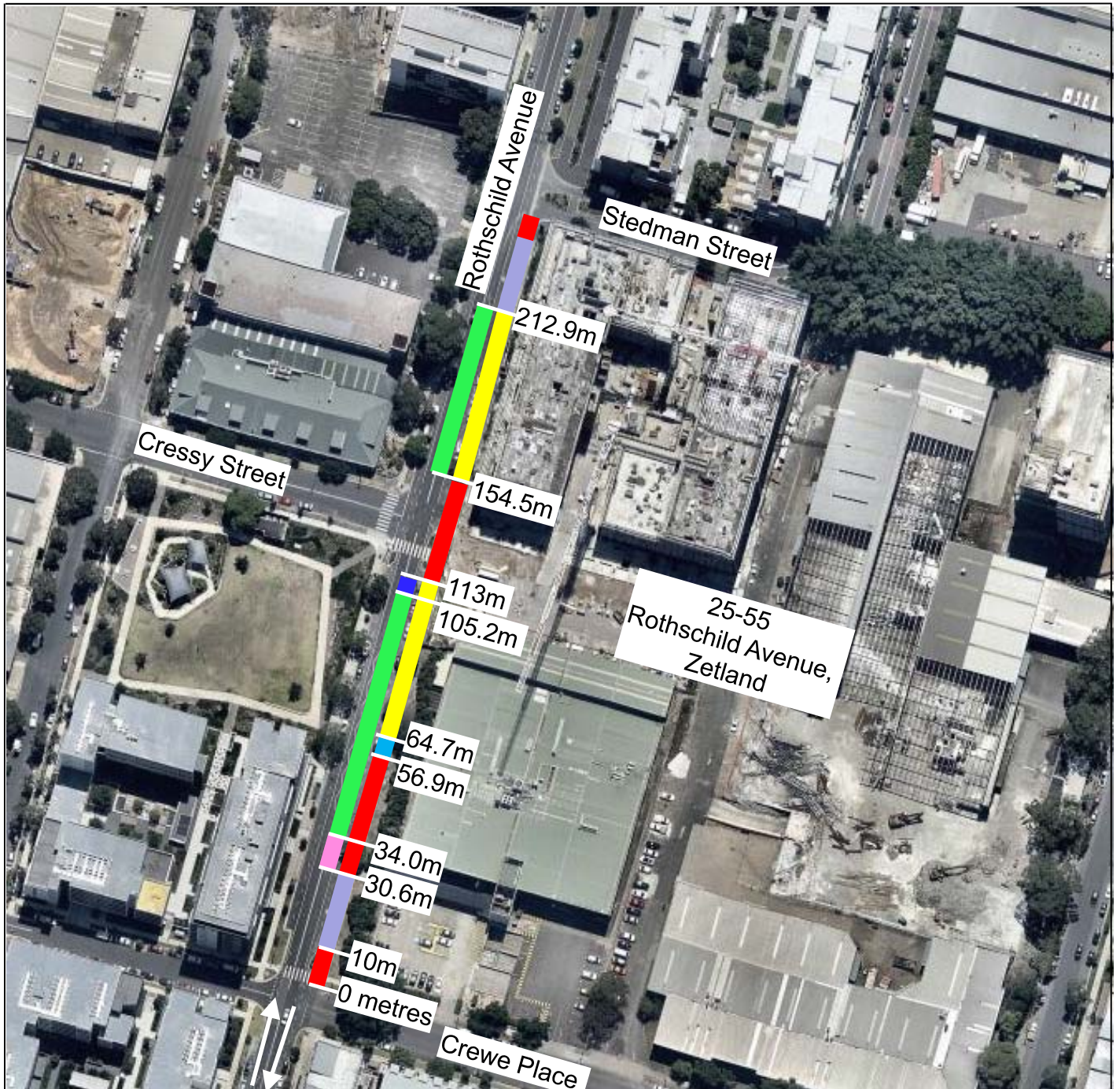
FINANCIAL








All costs associated with the proposal will be borne by the Applicant.

ATTACHMENTS



Parking – Timed Parking – Rothschild Avenue Rosebery

Eoin Cunningham, Senior Traffic Engineer



	No Stopping (Existing)		Bus Zone (Existing)		2P 8am-8pm (Proposed)
	Disability Parking (Existing)		Bus Zone (Proposed)		Disability Parking (Proposed)
	1P 8:30am-6pm Mon-Fri (Existing)				

Source: Nearmap -- Saturday 11 February 2017

	PROPOSAL	
	PROPOSED TIMED PARKING EASTERN SIDE OF ROTHSCHILD AVENUE ROSEBERY	

